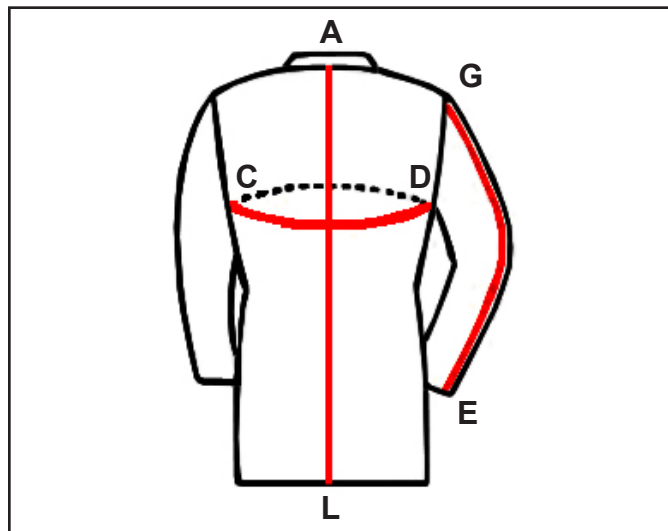


# Static Dissipative Lab Coats Instructions for Use



Figure 1. Charleswater Static Dissipative Lab Coat

- 2 side pockets and 1 breast pocket
- ESD protective symbol on breast pocket
- Quick opening and closing snap
- Buttons are not exposed (covered by overlap)
- Optimised width of conductive grid
- Machine washable up to 40°C
- Electrical properties maintained after more than 50 industrial launderings
- Standard colour: white
- Unisex sizes from XS to XXL (see table)
- Custom colours available
- Company logo (embroidered or printed) available on request
- Made in Hungary



## Description

Charleswater Static Dissipative Lab Coats meet the required limit for Rp-p of less than  $1 \times 10^{11}$  ohms as stated in EN 61340-5-1, tested per ANSI/ESD STM2.1.

“The ESD risk provided by everyday clothing cannot be easily assessed. The current general view of experts is that the main source of ESD risk may occur where ESDS [ESD sensitive items] can reach high induced voltage due to external fields from the clothing, and subsequently experience a field induced CDM [Charged Device Model] type discharge. So ESD control garments may be of particular benefit where larger ESDS having low CDM withstand voltage are handled, and operators habitually wear everyday clothing that could generate electrostatic high fields.” [CLC TR 61340-5-2 User guide Garments sub-clause 4.7.7.1 Introductory remarks]

## Main features:

- Meets required limit of EN 61340-5-1  $Rp-p < 1 \times 10^{11}$  ohms tested per ANSI/ESD STM2.1
- Lightweight, comfortable and breathable material
- Finish is crease resistant
- Composition: Polyester, cotton and conductive fibres
- Cuffs with snap-fastener

## Sizes and Measurements

Part #	Size*	Shoulders (cm)	C-D (cm)	A-L (cm)	G-E (cm)
<a href="#">72150</a>	XS	48	112	95	60
<a href="#">72151</a>	S	49	116	96	61
<a href="#">72152</a>	M	50	120	99	64
<a href="#">72153</a>	L	51	124	99	65
<a href="#">72154</a>	XL	54	131	102	65
<a href="#">72155</a>	XXL	58	136	104	66

Please note that measurements are in cm and are an indication only.

Measurements equal average sizes and can be subject to change without notice

\*Unisex Fit Both for Men and Women

## Washing Instructions

The conductive fibres are sensitive to heat, alkali, acids, fabric softeners and bleaches.

We recommend:

- Wash in hot/warm water (max. 40°C) using a neutral detergent
- Do not use fabric softeners or bleach; do not dry clean
- Tumble-dry at low temperature
- Generally no ironing required; if required, iron at maximum temperature of 110°C.

## Technical Properties:

Composition (nominal)	
Cotton	33%
Polyester	63%
Conductive Fibres	4%
Washing Instructions	
Washing	Machine washable up to 40°C
Ironing	Ironing temperature up to 110°C
Bleaching	Do not bleach
Dry cleaning	Do not dry clean
Tumble Drying	Low drying temperature
Surface Resistance	
Test Voltage	100V
Surface Resistance $R_{p,p}$	$< 1 \times 10^{11}$ ohms per ANSI/ESD STM2.1

## Limited Warranty

Charleswater expressly warrants that for a period of one (1) year from the date of purchase, Charleswater Static Dissipative Lab Coats will be free of defects in material (parts) and workmanship (labour). Within the warranty period, a unit will be tested, repaired or replaced at Charleswater's option, free of charge. Call Customer Service at 0044 (0) 1462 672005 for a Return Material Authorisation (RMA) and for proper shipping instructions and address. Any unit under warranty should be shipped prepaid to the Charleswater factory. You should include a copy of your original packing slip, invoice, or other proof of purchase date. Warranty repairs will take approximately two weeks.

If your unit is out of warranty, Charleswater will quote repair charges necessary to bring your unit to factory standards. Call Customer Service at 0044 (0) 1462 672005 for a Return Material Authorisation (RMA) and proper shipping instructions and address.

## Warranty Exclusions

THE FOREGOING EXPRESS WARRANTY IS MADE IN LIEU OF ALL OTHER PRODUCT WARRANTIES, EXPRESSED AND IMPLIED, INCLUDING MERCHANTABILITY AND FITNESS FOR A PARTICULAR PURPOSE WHICH ARE SPECIFICALLY DISCLAIMED. The express warranty will not apply to defects or damage due to accidents, neglect, misuse, alterations, operator error, or failure to properly maintain, clean or repair products.

## Limit of liability

In no event will Charleswater or any seller be responsible or liable for any injury, loss or damage, direct or consequential, arising out of the use of or the inability to use the product. Before using, users shall determine the suitability of the product for their intended use, and users assume all risk and liability whatsoever in connection therewith.