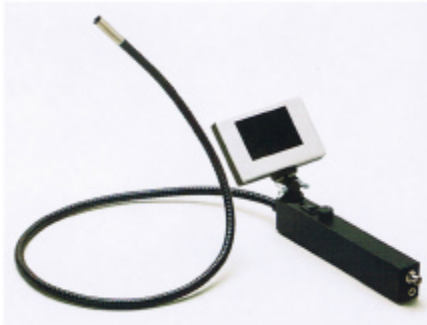


Semi-flexible Video Borescope system

Snake Scope

Handheld video endoscope system with robust semi flexible water and oil resistant insertion tube (goose neck). Snake Scope is designed for inspection work, to examine objects in tightly packed equipments or, when the inspector needs to gain easy access to objects requiring inspection.



Mobility

For maximum mobility, snake Scope might be ordered with a built-in 3.5" colour LCD monitor and rechargeable Li-Ion battery unit. For stationary applications, e. g. at production plants, laboratories or other fix locations, the instrument can be connected to TV or any external video monitor.

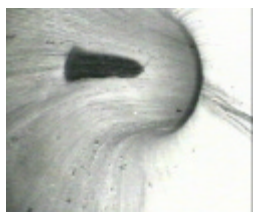


Image recording and Documentation

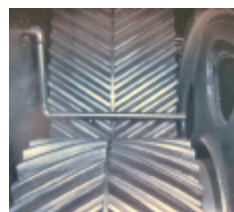
Snake Scope can be directly connected to your PC or Laptop via any of Optilia's external USB2.0 or FireWire frame grabbers. Digital images or video films are easily recorded for further analysis and documentation of the inspection work.

Image quality

Snake Scope applies precision wide angle optics and high resolution micro image sensor on the head of the insertion tube. The camera captures images with high resolution power rich colour throughout a large dynamic range. Built-in, long-life white LED light sources with fibre optics light guides are utilized from control unit to the distal end of the endoscope for bright illumination of the inspecting objects.



Pipes and tubes



Gear boxes



Welding examinaition

Highlights of Snake Scope:

- High resolution optical system with bright built-in illumination and intensity control
- Large range of semi-flexible tube lengths and diameters for different requirements
- Digital image capture and recording in PC/Laptop via USB2.0
- Water and Oil resistance semi flexible insertion tube
- Mobile operation capability
- Easy and reliable operation
- Light weight and easy to carry

Dimensions:



Technical Specification:

Parameter	Snake Scope
Inserting tube length	1.0m, 2.0m, 3.5m, 6.0m, 10.0m
Inserting tube diameter	Ø10.5mm, Ø7.5mm, Ø4.8mm
Insertion tube material	Water and oil resistant plastic jacketed semi-flexible insertion tube. Stainless steel camera head with protection glass for optics.
Lighting system	Internal white LED light source with fibre optics light guides (4 spots)
Illumination control	from zero to maximum intensity
Direction of view	0° straight (90° with right angle tip mirror)
Viewing angle of optics	Approx. 70°
Focusing distance	adjustable from 10mm to infinity
Video Output	composite PAL (NTSC available)
Colour white balance	AWC
Gain and electronic shutter	Automatic
Built-in monitor	Colour 3.5" TFT LCD (optional)
Operation Temperature/Humidity	- 10°C ~+60°C / Rh.0~90% (No condensing)
Operation Temperature/Humidity	- 5°C ~+45°C / Rh.0~90% (No condensing)
Power	12VDC, 300mA
Dimensions	225(L) x 48 (W) x 25 (H) mm ((excl. insertion tube)
Weight	Approx. 500 gr. (1.0 meter tube length)

Included items when you order Snake Scope:

- Semi flexible video endoscope
- Power supply, connection cables and instructions manual
- Aluminium Transport Case

Options:

1. Attachable colour 3.5" TFT LCD monitor (is assembled on the video endoscope prior to delivery).
2. Rechargeable Li-Ion battery unit.
3. 90° mirror tip adapter.
4. USB2.0 or Firewire video capture for direct. PC/Laptop connection.



The more you can see, the more you can fix!