



DENTAL LABORATORY DUST AND FUME EXTRACTION SOLUTIONS

DentalPRO 400

MULTI USER DUST EXTRACTION SYSTEM

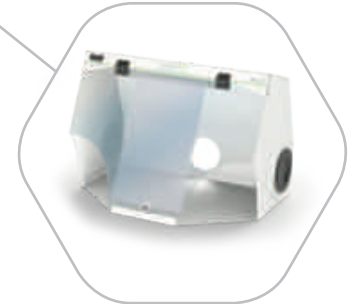
FOR **HAND FINISHING** DENTAL APPLICATIONS.

BOFA's DentalPRO 400 under bench dust extraction system effectively removes smaller particulates generated during the hand finishing of dental implants.

The DentalPRO 400 is ideally suited to manual bench top applications, where technicians need to be able to work without restriction, but in the knowledge that dust particles are being effectively removed to maintain a safe working environment.

The high vacuum pump used in the DentalPRO 400 is brushless and designed for continuous running to in excess of 30,000 hours before requiring servicing. The bag filter has a large 6.4 litre capacity and the HEPA filter is very high efficiency.

This multi user system combines maximum operator protection in a small footprint, easy to operate unit with low running costs.



STANDARD FEATURES:

- Filter full indicator
- Digital speed control
- High efficiency filters (99.997% @ 0.3 microns)
- Large capacity filter bag
- Simple operation
- Low running costs
- Small footprint

OPTIONAL FEATURES:

- Foot switch
- 24V Remote stop / start interface + Override
- Filter signal



TECHNICAL DATA

	EU	US
Dimensions (HxWxD)	596 x 286 x 275mm	23.5 x 11.3 x 10.8"
Cabinet construction	Powder coated mild steel	
Airflow / pressure	400m ³ /hr / 96mbar	235cfm / 96mbar
Electrical data	90 - 257v 1ph 50/60Hz Full load current: 10 amps / 1.1kw. 16A trip ON / OFF switch	
Noise level	< 66dBA (at typical operating speed)	
Weight	12.5kgs	27.6lbs
Approvals	CE	

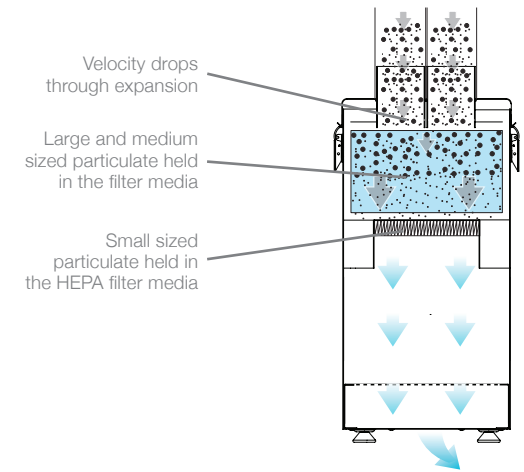
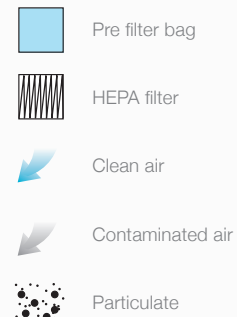
PRE FILTER BAG SPECIFICATIONS

Filter holding capacity	6.4 ltrs
Filter media	Polyester
Filter media construction	Bag filter
Filter efficiency	H10 (95% @ 0.3 microns)

HEPA FILTER SPECIFICATIONS

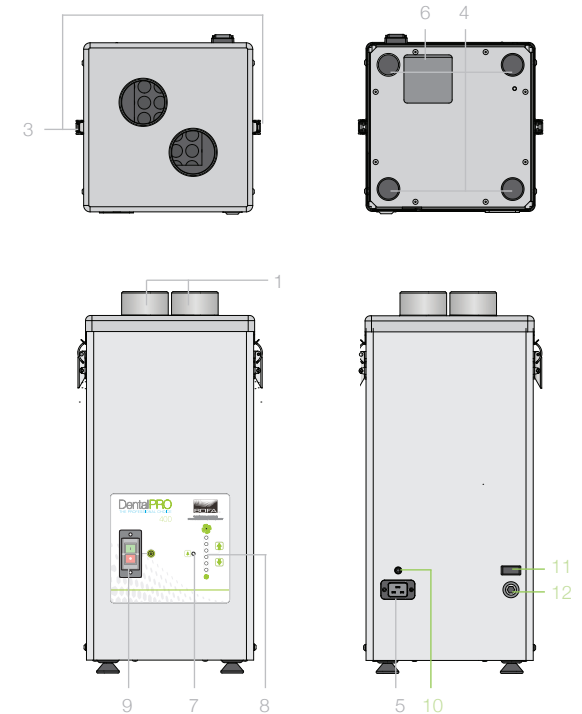
HEPA filter media	Glass fibre
HEPA media construction	Maxi pleat construction with webbing spacers
Filter efficiency	99.997% @ 0.3 microns

AIRFLOW THROUGH FILTERS



TECHNICAL SPECIFICATION

1. Hose inlet - 2 x 75mm
2. Unit lid
3. Latch
4. Rubber feet
5. Power inlet
6. Exhaust outlet
7. Filter full indicator
8. Speed control
9. Power switch
10. Optional foot switch socket
11. Optional interfacing connection
12. Optional override switch



1 UNIT

A. UNIT

Model	Options	Voltage	Part Number
DentalPRO 400 Powder coated unit Twin port 75mm lid	24V Stop / Start Override Silter Change Signal	90V - 257V	DL0944A0000
			DL0944A0001



B. UNIT OPTION

Description	Part Number
Foot switch (ON / OFF Operation)	A1070184

FILTERS

REPLACEMENT FILTERS

Description	Part Number
Bag filter	A1030378
HEPA filter	A1030379

Other hose kits and filters are available. All of the above units are fitted with our standard filter combinations. For specific applications please call us for details. Replacement filters should always be ordered using the part number on the filters inside your extractor to ensure the correct filter is ordered. Datasheet correct at time of print.

2 HOSE KITS

A. BENCH TOP HOSE KIT

NEEDED IF ORDERING FROM MENU **3A**

Description	Part Number
Hose kit with floptop table mount to connect to DentalPRO desk accessory	A1020309



B. CABINET HOSE KIT

NEEDED IF ORDERING FROM MENU **3B**

Description	Part Number
Hose kit to connect to DentalPRO Xtract cabinet	A1020068



3 ACCESSORIES

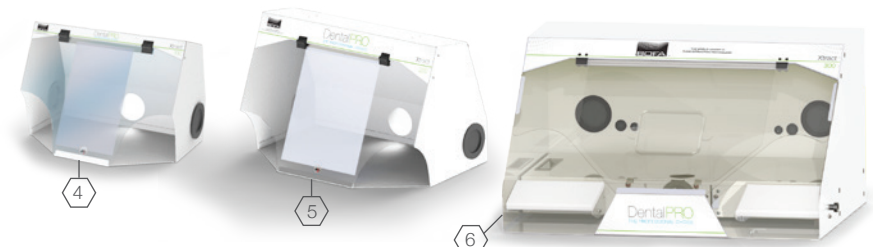
A. ARM ACCESSORIES

Number Reference	Description	Part Number
1	DentalPRO LED Light Arm - 50mm Stay Put Arm	A1020314
2	DentalPRO Down Draught Tray - 50mm Flexi Hose	A1020316
3	DentalPRO Plenum Funnel Arm - 50mm Stay Put Arm	A1020315



B. CABINET ACCESSORIES

Number Reference	Description	Part Number
4	DentalPRO Xtract 100	D0945A0000
5	DentalPRO Xtract 200	D0946A0000
6	DentalPRO Xtract 300	D0947A0000



DentalPRO-400:26/9/16V:3.4



BOFA INTERNATIONAL LTD

Tel: +44 (0) 1202 699 444 Fax: +44 (0) 1202 699 446 Email: sales@bofa.co.uk Web: www.bofa.co.uk

BOFA AMERICAS, INC

Tel: (618) 205 5007 Fax: (866) 707 2632 Email: sales@bofaamericas.com Web: www.bofaamericas.com

